



OWNER'S MANUAL

X-41ATR TURBO-PRO Professional Axial Fan

XPOWER MANUFACTURE, INC.
220 Clary Avenue
San Gabriel, CA 91776, USA
Tel: 626-285-3301, Fax: 626-285-3302
www.xpower.ws



PLEASE READ AND SAVE THESE INSTRUCTIONS



INDEX

Introduction	2
Features	2, 3
Operation	4
Specifications	5
Safety Instructions	5, 6
Warranty	7
Troubleshooting	8
Parts List	9
Warranty Registration Form	10

INTRODUCTION

Thank you for purchasing the XPOWER X-41ATR Turbo-Pro Axial Fan! XPOWER Manufacture, Inc. with over 25 years of manufacturing experience is bringing a series of products with the most advanced technology in today's market. Our goal with the 41 series was to bring an axial fan never seen before, through our research and design; we have brought a revolutionary series of fans to the industry that provides long-life operation, excellent performance, compact design and extremely low noise. Our Axial fans are completely speed controllable, a first in the industry. We also offer a high quality dual outlet for Daisy-Chaining and a 3 hour timer for ease of use in professional applications. Enjoy!

FEATURES

EXTERNAL ROTOR MOTOR:

The external movement of the rotor cools down the motor more efficiently, providing safer operation and longer life for the machine. This ultra-unique design also provides excellent power, compact size and extremely low noise compared to traditional induction motors.

VARIABLE SPEED CONTROL SWITCH:

An industry first, our completely variable speed control allows you to adjust the fan speed exactly to your liking. This is extremely useful in ventilation applications where precise volume guidelines need to be met.

FEATURES (cont'd)

DAISY CHAIN FEATURE:

2 Built-In Outlets for Additional Machines

3-HOUR TIMER:

Extremely convenient in busy contractor projects for the professional or a busy afternoon for the handyman, 3 hour timer allows you to setup multiple fans without having to comeback to turn them off.

SPECIALLY DESIGNED AIR FIN GUIDE:

Contoured to provide maximum focused and extended airflow volume and velocity.

360° ROTATION- RACK STAND INCLUDED:

Full Rotation of the axial fan to fit the need of any project from drying flooded floors, painted walls and damp damaged ceilings.

SUPER LIGHTWEIGHT:

24.2 Lbs. Unit Weight / Durable ABS Housing

COMPACT DESIGN W/ STACKABILITY:

L-21.9" x W-9.8" x H-22.5"

Unit Size – 2.79 CBF Only

Stackable Up To 5 Units

OPERATION

- 1) With the unit unplugged, carefully place the XPOWER unit on stable, flat, and dry surface.
- 2) **Plug the cord into a grounded G.F.C.I. outlet only**, the use of a 3-prong to 2-prong adapter is strictly prohibited.
- 3) Turn on the switch to make sure the fan is operating correctly.
- 4) All fans in operation must be supervised at all times.

Daisy Chain

If utilizing the Daisy-Chain feature, only use devices under 4 AMPS for 12-AMP circuit. X-41ATR axial fan has an on-board Circuit Breaker. If the Auxiliary Outlet overloads, the Circuit Breaker will trip. If the Breaker does trip ,unplug the units and press the Circuit Breaker Reset button. Plug the units back into the power source and turn on the switch.

Timer

Models using a timer can be set up to 3 hours long. After the timer expires, the fan will turn off while the speed control will be at the last set position. Set position to off and then again at a desired speed to continue operation.

SPECIFICATIONS

Model	X-41ATR
Voltage/Frequency	115V/60HZ
Airflow	3,600 CFM
AMPS	3.2A
Power	1/3 HP
Weight	24.2 LBS
Dimensions (L x W x H)	21.9" x 9.8" x 22.5"
Cord	20 ft. / 14AWG
Housing	Injection-molded ABS
Positions	360° Rotational Coverage
Timer	Yes – 3 Hours
Outlet	Yes – 2 Outlets

SAFETY INSTRUCTIONS

1. To prevent electric shock, do not operate the unit in standing water. Never plug in or unplug the unit with wet hands or while standing in water.
2. To avoid risk of injury, do not direct air flow at face or body.
3. **WARNING:** To Reduce The Risk Of Fire Or Electric Shock, Do Not Use Unit With Any Solid-State Speed Control Device.
4. Use only with GFCI protected receptacles. Please contact a qualified electrician for verification and / or installation of a GFCI receptacle if necessary.

SAFETY INSTRUCTIONS (cont'd)

5. Do not operate any unit with a damaged cord or plug. Discard fan or return to an authorized service facility for examination and/or repair.
6. It's automatically operated device. To reduce the risk of injury disconnect from power supply before servicing.
7. Do not run cord under carpeting. Do not cover cord with throw rugs, runners, or similar coverings. Do not route cord under furniture or appliances. Arrange cord away from traffic area and where it will not be tripped over.
8. Do not allow children to play with or around an air mover at any time.
9. Do not move or carry the air mover while unit is operating.
10. All air movers in operation must be supervised at all times.
11. Keep air intakes and exhausts clean at all times to avoid clogging or blocking in order to prevent overheating the unit. Blocking the air intake could result in a fire or electrical hazards.
12. To prevent injury to persons and to avoid objects from coming in contact with the fan blade, do not remove any screens or safety guards from this unit. Damage in this manner will void your warranty.
13. Always place the fan on a smooth and level surface for safe operation.
14. Do not use unit if defective or damaged.
15. Unplug the unit before performing any maintenance, cleaning, or servicing.
16. The axial fan must be supervised at all times during operation.
17. Any misuse or abuse of this product will void the warranty.

XPOWER LIMITED WARRANTY (USA)

XPOWER's Limited Warranty covers the unit (excludes POWER CORD) from defects in material and craftsmanship. The Warranty covers normal use for a term of one year from the original date of purchase including parts, labor and one way shipping. Non-contiguous states must pay for roundtrip freight. A purchase receipt must be provided.

Important!

This warranty does not cover or apply to defects due directly or indirectly to misuse, abuse, disassembly, alteration, corrosive chemicals, improper voltage, fire, flood, negligence, accident, improperly or incorrectly performed maintenance or repair, or failure to perform necessary maintenance or repair, or if the use of this product is not in compliance with the instructions and specifications for its use

In order to receive service or replacement parts under warranty, you must:

- 1) Contact us before the warranty has expired,
- 2) Call for return merchandise authorization number,
- 3) Provide original, legible proof of purchase, and
- 4) Ship to:

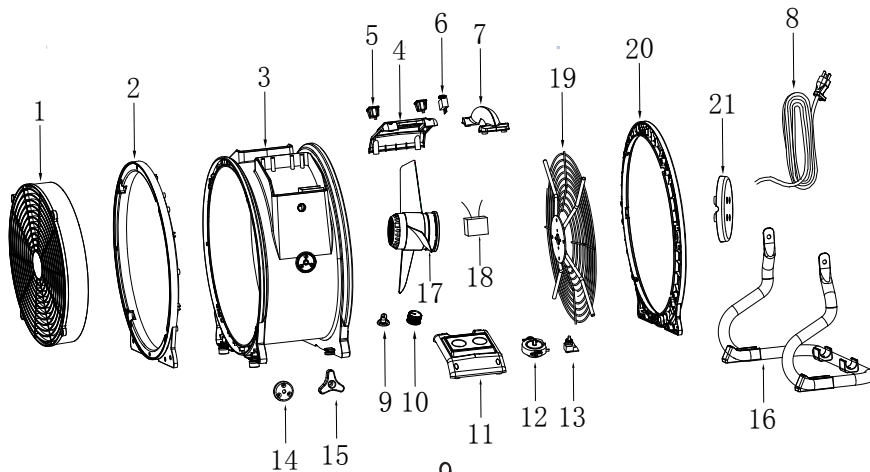
XPOWER Manufacture, Inc
220 Clary Ave.
San Gabriel, CA 91776

TROUBLESHOOTING

SYMPTOM	PROBABLE CAUSE	ACTION
Motor Not Running	Switched Off	Make sure unit is plugged in and switch is turned to ON mode
	Power failure	Check outlet/Change to another outlet
	Wiring failure	Contact XPOWER for repair
Scraping Noise From Fan	Obstructions at the intake or exhaust of fan	Remove obstruction(s)
	Fan broken	Contact XPOWER for repair
Weak Air Flow	Obstructed vents/inlets	Clean out vents/inlets

41 Series Parts List

Item No.	Parts Name	Item No.	Parts Name	Item No.	Parts Name
1	Front air cover	2	Front end cover	3	Housing
4	Outlet cover	5	AC receptacle	6	Circuit breaker
7	Handle cover	8	Power cord	9	Timer knob
10	Speed control knob	11	Switch plate	12	Timer
13	Switch	14	Side cover	15	Rack handle
16	Rack	17	Motor	18	Capacitor
19	Rear air cover	20	Rear end cover	21	Cover



WARRANTY REGISTRATION

Please complete and mail or fax this form for your product warranty. For multiple units, please list serial numbers on a separate sheet of paper. Address: XPOWER MANUFACTURE, INC, 220 Clary Avenue San Gabriel, CA 91776, USA
Tel: (626) 285-3301; Fax: (626) 285-3302

Company Name / Contact Person / Title _____

Address _____ City _____

State / Province _____ Zip _____ Country _____

Phone _____ Fax _____ E-mail _____

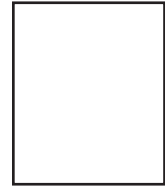
Model # _____ **Serial #:** _____

Date of Purchase ____ / ____ / ____ **Purchased From** _____

Additional Comments / Suggestions _____



From: _____



TO:

XPOWER MANUFACTURE, INC.

220 Clary Avenue

San Gabriel, CA 91776, USA

Tel: 626-285-3301, Fax: 626-285-3302





OWNER'S MANUAL

X-41ATR TURBO-PRO Professional Axial Fan

XPOWER MANUFACTURE, INC.
220 Clary Avenue
San Gabriel, CA 91776, USA
Tel: 626-285-3301, Fax: 626-285-3302
www.xpower.ws



PLEASE READ AND SAVE THESE INSTRUCTIONS

INTRODUCTION

Thank you for purchasing the XPOWER X-41ATR Turbo-Pro Axial Fan! XPOWER Manufacture, Inc. with over 25 years of manufacturing experience is bringing a series of products with the most advanced technology in today's market. Our goal with the 41 series was to bring an axial fan never seen before, through our research and design; we have brought a revolutionary series of fans to the industry that provides long-life operation, excellent performance, compact design and extremely low noise. Our Axial fans are completely speed controllable, a first in the industry. We also offer a high quality dual outlet for Daisy-Chaining and a 3 hour timer for ease of use in professional applications. Enjoy!

FEATURES

EXTERNAL ROTOR MOTOR:

The external movement of the rotor cools down the motor more efficiently, providing safer operation and longer life for the machine. This ultra-unique design also provides excellent power, compact size and extremely low noise compared to traditional induction motors.

VARIABLE SPEED CONTROL SWITCH:

An industry first, our completely variable speed control allows you to adjust the fan speed exactly to your liking. This is extremely useful in ventilation applications where precise volume guidelines need to be met.

INDEX

Introduction	2
Features	2, 3
Operation	4
Specifications	5
Safety Instructions	5, 6
Warranty	7
Troubleshooting	8
Parts List	9
Warranty Registration Form	10

- 1 -

FEATURES (cont'd)

DAISY CHAIN FEATURE:

2 Built-In Outlets for Additional Machines

3-HOUR TIMER:

Extremely convenient in busy contractor projects for the professional or a busy afternoon for the handyman, 3 hour timer allows you to setup multiple fans without having to comeback to turn them off.

SPECIALLY DESIGNED AIR FIN GUIDE:

Contoured to provide maximum focused and extended airflow volume and velocity.

360° ROTATION- RACK STAND INCLUDED:

Full Rotation of the axial fan to fit the need of any project from drying flooded floors, painted walls and damp damaged ceilings.

SUPER LIGHTWEIGHT:

24.2 Lbs. Unit Weight / Durable ABS Housing

COMPACT DESIGN W/ STACKABILITY:

L-21.9" x W-9.8" x H-22.5"

Unit Size – 2.79 CBF Only

Stackable Up To 5 Units

- 3 -

OPERATION

- 1) With the unit unplugged, carefully place the XPOWER unit on stable, flat, and dry surface.
- 2) **Plug the cord into a grounded G.F.C.I. outlet only**, the use of a 3-prong to 2-prong adapter is strictly prohibited.
- 3) Turn on the switch to make sure the fan is operating correctly.
- 4) All fans in operation must be supervised at all times.

Daisy Chain

If utilizing the Daisy-Chain feature, only use devices under 4 AMPS for 12-AMP circuit. X-41ATR axial fan has an on-board Circuit Breaker. If the Auxiliary Outlet overloads, the Circuit Breaker will trip. If the Breaker does trip ,unplug the units and press the Circuit Breaker Reset button. Plug the units back into the power source and turn on the switch.

Timer

Models using a timer can be set up to 3 hours long. After the timer expires, the fan will turn off while the speed control will be at the last set position. Set position to off and then again at a desired speed to continue operation.

- 4 -

SAFETY INSTRUCTIONS (cont'd)

5. Do not operate any unit with a damaged cord or plug. Discard fan or return to an authorized service facility for examination and/or repair.
6. It's automatically operated device. To reduce the risk of injury disconnect from power supply before servicing.
7. Do not run cord under carpeting. Do not cover cord with throw rugs, runners, or similar coverings. Do not route cord under furniture or appliances. Arrange cord away from traffic area and where it will not be tripped over.
8. Do not allow children to play with or around an air mover at any time.
9. Do not move or carry the air mover while unit is operating.
10. All air movers in operation must be supervised at all times.
11. Keep air intakes and exhausts clean at all times to avoid clogging or blocking in order to prevent overheating the unit. Blocking the air intake could result in a fire or electrical hazards.
12. To prevent injury to persons and to avoid objects from coming in contact with the fan blade, do not remove any screens or safety guards from this unit. Damage in this manner will void your warranty.
13. Always place the fan on a smooth and level surface for safe operation.
14. Do not use unit if defective or damaged.
15. Unplug the unit before performing any maintenance, cleaning, or servicing.
16. The axial fan must be supervised at all times during operation.
17. Any misuse or abuse of this product will void the warranty.

- 6 -

SPECIFICATIONS

Model	X-41ATR
Voltage/Frequency	115V/60HZ
Airflow	3,600 CFM
AMPS	3.2A
Power	1/3 HP
Weight	24.2 LBS
Dimensions (L x W x H)	21.9" x 9.8" x 22.5"
Cord	20 ft. / 14AWG
Housing	Injection-molded ABS
Positions	360° Rotational Coverage
Timer	Yes – 3 Hours
Outlet	Yes – 2 Outlets

SAFETY INSTRUCTIONS

1. To prevent electric shock, do not operate the unit in standing water. Never plug in or unplug the unit with wet hands or while standing in water.
2. To avoid risk of injury, do not direct air flow at face or body.
3. **WARNING:** To Reduce The Risk Of Fire Or Electric Shock, Do Not Use Unit With Any Solid-State Speed Control Device.
4. Use only with GFCI protected receptacles. Please contact a qualified electrician for verification and / or installation of a GFCI receptacle if necessary.

- 5 -

XPOWER LIMITED WARRANTY (USA)

XPOWER's Limited Warranty covers the unit (excludes POWER CORD) from defects in material and craftsmanship. The Warranty covers normal use for a term of one year from the original date of purchase including parts, labor and one way shipping. Non-contiguous states must pay for roundtrip freight. A purchase receipt must be provided.

Important!

This warranty does not cover or apply to defects due directly or indirectly to misuse, abuse, disassembly, alteration, corrosive chemicals, improper voltage, fire, flood, negligence, accident, improperly or incorrectly performed maintenance or repair, or failure to perform necessary maintenance or repair, or if the use of this product is not in compliance with the instructions and specifications for its use

In order to receive service or replacement parts under warranty, you must:

- 1) Contact us before the warranty has expired,
- 2) Call for return merchandise authorization number,
- 3) Provide original, legible proof of purchase, and
- 4) Ship to:

XPOWER Manufacture, Inc
220 Clary Ave.
San Gabriel, CA 91776

- 7 -

TROUBLESHOOTING

SYMPTOM	PROBABLE CAUSE	ACTION
Motor Not Running	Switched Off	Make sure unit is plugged in and switch is turned to ON mode
	Power failure	Check outlet/Change to another outlet
	Wiring failure	Contact XPOWER for repair
Scraping Noise From Fan	Obstructions at the intake or exhaust of fan	Remove obstruction(s)
	Fan broken	Contact XPOWER for repair
Weak Air Flow	Obstructed vents/inlets	Clean out vents/inlets

- 8 -

WARRANTY REGISTRATION

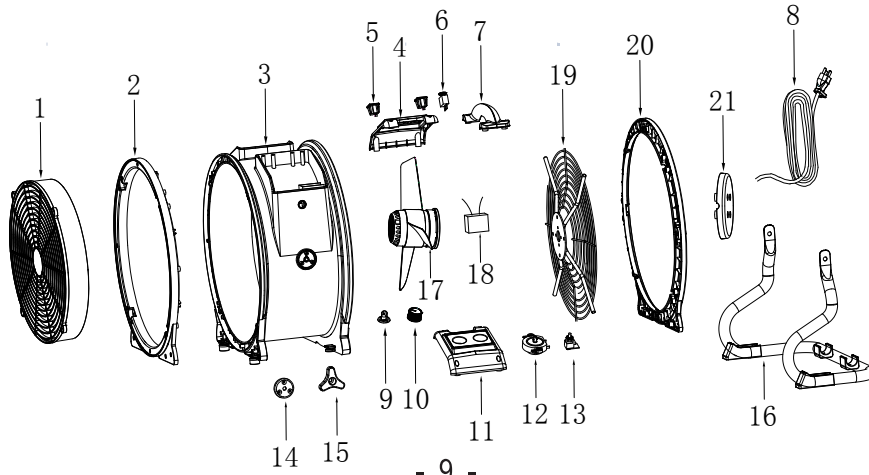
Please complete and mail or fax this form for your product warranty. For multiple units, please list serial numbers on a separate sheet of paper. Address: XPOWER MANUFACTURE, INC, 220 Clary Avenue San Gabriel, CA 91776, USA
Tel: (626) 285-3301; Fax: (626) 285-3302

Company Name / Contact Person / Title _____	
Address _____	City _____
State / Province _____	Zip _____ Country _____
Phone _____	Fax _____ E-mail _____
Model # _____	Serial #: _____
Date of Purchase ____/____/____	Purchased From _____
Additional Comments / Suggestions _____	



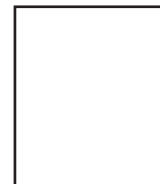
41 Series Parts List

Item No.	Parts Name	Item No.	Parts Name	Item No.	Parts Name
1	Front air cover	2	Front end cover	3	Housing
4	Outlet cover	5	AC receptacle	6	Circuit breaker
7	Handle cover	8	Power cord	9	Timer knob
10	Speed control knob	11	Switch plate	12	Timer
13	Switch	14	Side cover	15	Rack handle
16	Rack	17	Motor	18	Capacitor
19	Rear air cover	20	Rear end cover	21	Cover



- 9 -

From: _____



TO:
 XPOWER MANUFACTURE, INC.
 220 Clary Avenue
 San Gabriel, CA 91776, USA
 Tel: 626-285-3301, Fax: 626-285-3302

