

PLEASE READ AND SAVE THESE INSTRUCTIONS



AIR SCRUBBER

OWNER'S MANUAL

Models: X-3300, X-3500



XPOWER MANUFACTURE, INC.
220 Clary Avenue
San Gabriel, CA 91776, USA
Tel: 626-285-3301, Fax: 626-285-3302
www.xpower.ws

Index

Introduction	2
Safety Instructions	3
Operation	4
Specifications	5
Parts List	6~7
4-Stage Filtration Systems	8
Maintenance	9-14
Cleaning of Washable Nylon Pre-Filters	10
X-3300 Primary Filter Care	11
X-3500 Primary Filter Care.....	12-13
Filter Replacement	14
Troubleshooting	15
Warranty / Service	16
Registration Form	18

Introduction

XPOWER's unique and highly innovative air scrubber purifying systems create a fresh, clean environment in even difficult areas such as grooming salons. Both the X-3500 & X-3300 feature an advanced technology 4 stage filtration system along with a powerful 1/3 HP high capacity motor for spaces up to 1500 sq. ft. Enjoy breathing healthier with your XPOWER Professional Air Purification Equipment!

Features:

- 4-stage air filtration system
- Low amp usage with high airflow capacity from 550 CFM
- Variable Speed Control
- Easy cord wrap design
- Convenient filter change (clean) light
- Stackable, compact, and lightweight design
- 2 airflow positions – upright (vertical) or horizontal
- Durable and rugged ABS housing
- 1 year limited warranty

Safety Instructions

WARNING: IMPORTANT SAFETY PRECAUTIONS! PLEASE READ COMPLETELY BEFORE USING PRODUCT!

When using electrical appliances, basic safety precautions should always be followed to reduce the risk of fire, electric shock, and personal injury, including but not limited to the following:

1. To prevent electric shock, do not operate the unit in standing water. Never plug in or unplug the unit with wet hands or while standing in water.
2. To avoid risk of injury, do not direct air flow at face or body.
3. Use only with GFCI protected receptacles. Please contact a qualified electrician for verification and / or installation of a GFCI receptacle if necessary.
4. Do not operate any unit with a damaged cord or plug. Discard Air Scrubbers or return to an authorized service facility for examination and/or repair.
5. Air Scrubber is an automatically operated device. To reduce the risk of injury, disconnect from power supply before servicing.
6. Do not run cord under carpet. Do not cover cord with throw rugs, runners, or similar coverings. Do not route cord under furniture or appliances. Arrange cord away from traffic area and where it will not be tripped over.
7. Do not allow children to play with or around the Air Scrubbers at any time.
8. Do not move or carry the Air Scrubber while unit is operating.
9. Keep air intakes and exhausts clean at all times. Avoid clogging or blocking to prevent the machine from overheating. Blocking the air intake could result in a fire or electrical hazards.
10. Always place the Air Scrubber on a smooth and level surface for safe operation.
11. Unplug the unit before performing any maintenance, cleaning, or servicing.
12. Any misuse or abuse of this product will void the warranty.

Operation

In order to remove airborne particles from the surrounding environment, XPOWER Air Scrubbers are designed to draw air through a series of filters and deliver the purest air. Each filter stage operates with progressively higher efficiency. The unit removes airborne particles like hair, skin flakes, visible dust, mold spores, pollen, pet dander and miscellaneous debris.

1. XPOWER Air Scrubbers are shipped ready-to-use. Prior to plugging the unit into the power source, inspect completely for any shipping damage.
2. Carefully place the Air Scrubber upright on a stable, flat dry surface.
3. Plug the electrical cord into the power outlet.
4. The unit can be used in 2 different angle positions: vertical and horizontal.
5. Turn the control knob to desired speed and make sure the unit operates normally.
6. To reduce the risk of injury, close supervision is necessary when the machine is used near children. Do not allow children to play with, or around the Air Scrubber at any time.



Filter Change (Clean) Light

The Red Filter Change Light will illuminate when accumulated debris is over-saturated, and filter needs to be cleaned. If the light is still illuminated after the filters are cleaned, the filter(s) possibly need to be replaced.

Specifications

MODEL NO.	X-3300	X-3500
VOLTAGE / FREQUENCY	115 V / 60 Hz	
POWER	1/3 HP	
AMPERAGE	2.3 Amps (On Highest Speed)	
RATED AIRFLOW	550 CFM	
SPEEDS (RPM)	Variable Speed Control (950 – 2,400 RPM)	
UNIT WEIGHT	30.5 lbs	32.8 lbs
UNIT DIMENSIONS (L x W x H)	19.6" x 12.3" x 21.6"	
CORD LENGTH	13 ft. / 18AWG	
HOUSING	ABS	
DUCT (AIR OUTLET) SIZES	5" x 10.8"	
FILTER SYSTEM	4-STAGE	
1 ST STAGE FILTER	NFR12 - 12" Ø I.D.	
	Washable Outer Nylon Mesh Filter	
2 ND STAGE FILTER	NFS16 - 16" x 16"	
	Washable Nylon Mesh Filter	
3 RD STAGE FILTER	WF35 - 16" x 16" x 1.4" Washable PET Purifying Filter	CF35 - 16" x 16" x 1.4" Activated Carbon Filter
	WF35 - 16" x 16" x 1.4" Washable PET Purifying Filter	HEPA35 - 16" x 16" x 1.4" HEPA Filter
FILTER CLEAN/CHANGE LIGHT	Indicates when the filters to be cleaned or changed	
STACKABLE	Up to 5 units high	
SAFETY CERTIFICATIONS	/	ETL/CETL



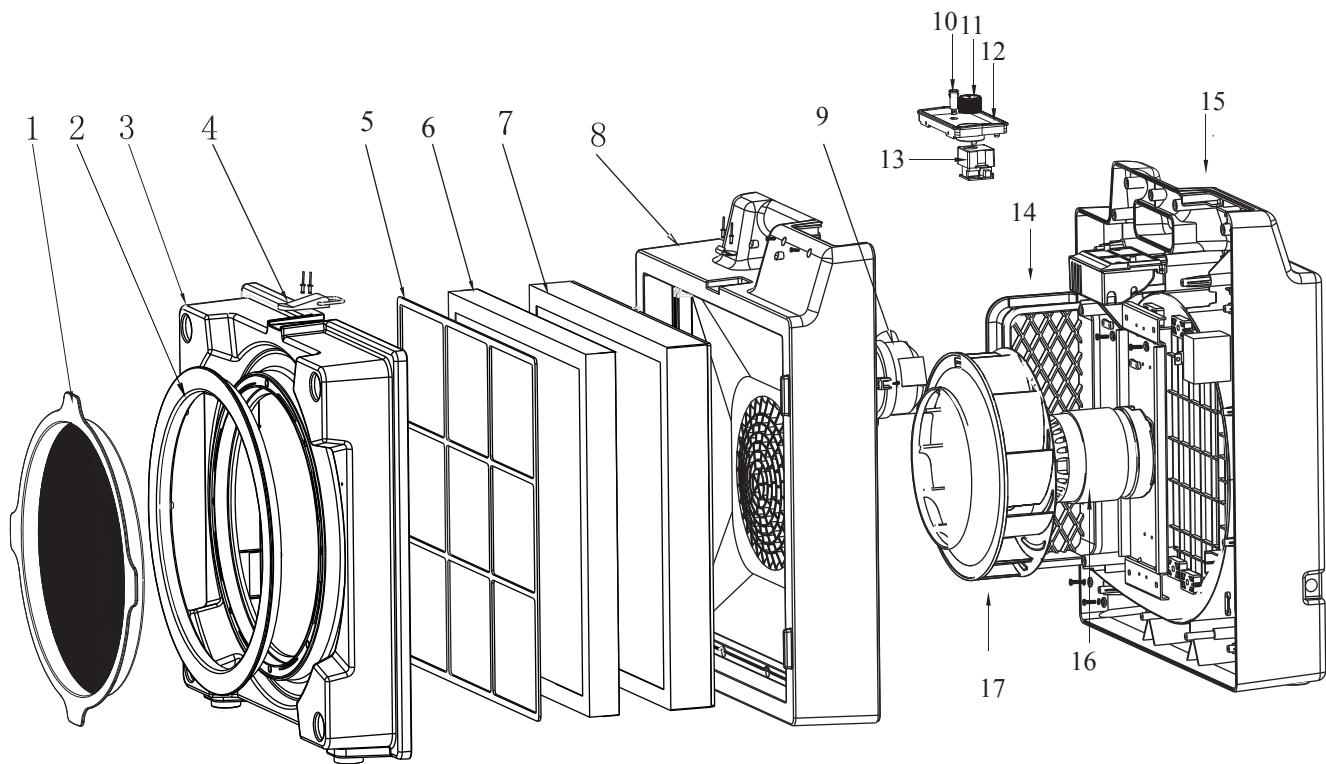
Air Scrubber Storage

Air Scrubbers can be stacked (up to 5) on their sides for storage. Stacking feature is not secure for transportation.

Parts List

Item No.	Parts Name	Item No.	Parts Name
1	Washable outer nylon mesh filter	2	Air Inlet
3	Inlet Panel	4	Latch
5	16"x16" Washable Nylon Mesh Filter	6	Activated Carbon Filter
7	1.4" Thick HEPA Filter	8	Front Housing
9	Pressure Switch	10	HEPA Filter Change Light
11	Speed Control Knob	12	Control Panel
13	Potentiometer	14	Air Outlet Grill
15	Rear Housing	16	Motor
17	Fan		

** Actual parts are not limited on this list, contact XPOWER for ordering parts.



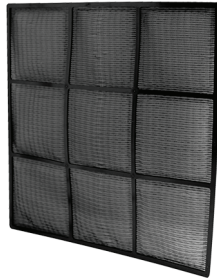
4-Stage Filtration Systems

1st Stage



NFR12
12" Ø I.D.
Washable Outer
Nylon Mesh Filter

2nd Stage



NFS16
16" x 16"
Washable Inner
Nylon Mesh Filter

X-3300

X-3500

3rd Stage



WF35 (Double Layered)
16" x 16" x 1.4"
Washable PET Purifying Filter

4th Stage



HEPA35
(16" x 16" x 1.4")
HEPA Filter



CF35
16" x 16" x 1.4"
Activated Carbon Filter

Maintenance

1. To keep the Air Scrubber clean, use a damp cloth to wipe the surface of the housing.
2. Never clean the Air Scrubber unit directly with water (see following pages for proper filter cleaning instructions).
3. When not in use, unplug and store the Air Scrubber in a dry indoor place out of reach of children.
4. Always disconnect the Air Scrubber from its power source before performing any maintenance or cleaning.

Important: Filter Maintenance and Replacement

Basic routine maintenance of filters is required to optimize performance of your air scrubber and extend the life of primary filters.

Both the XPOWER X-3300 and X-3500 filtration system include easy to clean, washable nylon pre-filters that should be frequently maintained. Monitor filters and clean or change out once they become loaded with particles. The air scrubber begins to reduce airflow and increase pressure drop. Overly loaded filters not only restrict CFM, they can also result in a loss of filtration efficiency. XPOWER Air Scrubbers include on-board pressure sensors that automatically alert the Filter Change (Clean) Light when the filters need cleaning. The filter may need to be changed after using for a quite long period.



Loaded Filter

Cleaning of Washable Nylon Pre-Filters

NFR12 & NFS16 - Outer and Inner Nylon Mesh Filters are washable. These Pre-filters will protect the inner filters from larger particles and therefore extend the life and usage of the primary 3rd & 4th Stage filters. Always make sure the Air Scrubber is turned off before removing filters. Before cleaning, remove all debris from both the inner and outer nylon mesh filters, then, rinse with water and lay flat on a clean and dry surface to dry completely before re-installing. The NFR12 and NFS16 filters are used for X-3300 and X-3500 air scrubbers as first two stages. Both filters need to be cleaned frequently, especially for the Outer Nylon Mesh Filter NFR12.



Fig. 1

Turn off the machine before cleaning the mesh filter



Fig. 2

Remove particles before rinsing with water



Fig. 3

Let filter dry on a clean and flat surface



Fig. 4

Re-install the clean, dry filter

X-3300 Primary Filter Care

WF35 – Two layers of washable PET Purifying Filters are featured with the X-3300 Air Scrubber. These filters trap smaller contaminants to alleviate allergies and other common respiratory problems.

The Primary WF35 filters require a simple maintenance routine for effective performance. The Filter Change Light will light up when filters need attention. Always make sure that the Air Scrubber is turned off before removing filters.

Cleaning X-3300 PET Purifying Filters (WF35):

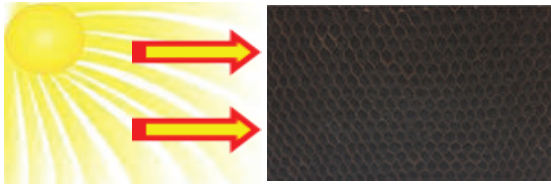
1. Remove filters and lay them on a flat clean surface
2. Use a vacuum or clean cloth to remove loose debris
3. Rinse thoroughly with water
4. Lay on a flat surface on top of a clean cloth to completely dry before reinstalling

ATTN: ONLY the X-3300 Features 4 Washable Filter Stages. DO NOT WET X-3500 Model primary Filters (Carbon CF35 & HEPA35)



X-3500 Primary Filter Care

CF35 - Activated Carbon Filters are used to remove contaminants and impurities through the process of chemical absorption. The CF35 captures a wide variety of volatile organic compounds that includes smoke, food odors, fumes from paint and paint thinners, sewer odors and more. Carbon Filters can be reused if the adsorbed substances are removed. This process is known as 'regeneration'. Simply heating the spent carbon at a given temperature for an adequate length of time can regenerate activated carbon to the point where it can be reused. The CF35 fits the X-3500 model; it is placed inside the housing in front of the HEPA filter. Always make sure that the Air Scrubber is turned off when removing the carbon filter. Never use water to clean the CF35 filters. Use vacuum or clean cloth and lay it flat on a clean and dry surface. For best results, put the CF35 under the sun and leave it there for a couple of hours. The capacity of the carbon filter will vary widely depending on conditions, but it should be replaced when a decline of effectiveness is noted.



X-3500 Primary Filter Care (cont'd)

HEPA35 – HIGH EFFICIENCY PARTICULATE AIR FILTER, also known as HEPA filter, ensures superior air quality inside our homes and protects us from a wide range of health risks associated with indoor air pollution. The filter is designed and implemented to trap even the tiniest contaminants (approximately 99.97% of all particles measuring 0.3 microns) that aren't usually captured by traditional air filters, in order to prevent allergies and other common respiratory problems. The HEPA filter requires a simple maintenance routine, which can be performed in a timely and cost-effective manner. To maximize HEPA filter life, be sure to clean/change the pre-filters regularly. The Filter Change Light will light up when filters need attention. Always make sure that the Air Scrubber is turned off before removing the HEPA filter. Never use water to clean the HEPA filter. Use vacuum or clean cloth and lay it flat on a clean, dry surface. When putting the HEPA filter back into the machine, make sure the side with the gasket is facing the motor housing to prevent air leakage.



Filter Replacement

The filters may need to be changed after certain period of time depending on your usage and the life of each type of filters.

All filter accessories are available for purchase directly from XPOWER's headquarters in California. Please call our Customer Service at (626) 376-0190 or email us at info@xpower.ws.

Always wear a respirator and personal protective gear when removing or replacing filters. Lay the Air Scrubber flat, unlock top latch of the housing, open the inlet panel and remove filters.

Precautionary Measure When Cleaning and Changing Filters

An air scrubber captures particles that can be hazardous to human health. During the process of changing filters, decontamination, or performing maintenance, large concentrations of captured particles can become airborne in the immediate area. For these reasons, air scrubber operators should wear appropriate personal protection equipment (PPE) when performing any type of service on an air scrubber. A NIOSH-approved respirator is always essential for these tasks. If you've used the air scrubber for mold remediation or in another environment with known contaminants, you should also consider wearing gloves, eye protection and coverall



NIOSH-Approved
Respirator Mask

Disposal of Filters

The particles captured by a filter can cause adverse human health effects once they are released into the air. For this reason, you should dispose of used filters with care. You should place used filters in a plastic bag and seal the top before disposing. Always follow local regulations before disposing.

Troubleshooting

For any problems not listed below, call your local distributor or contact our Service Department.

SYMPTOM	POSSIBLE CAUSE	ACTION
Motor not running	Switched off	Make sure unit is plugged in and switch is turned to ON mode
	Power failure	Check outlet/change to another outlet
	Wiring failure	Contact XPOWER for service/repair.
Scraping noise from fan	Obstruction at the intake or exhaust of fan	Remove obstruction
	Fan broken	Contact XPOWER for service/repair
Weak air flow	Obstructed vents and/or filters	Clean out vents/inlets/filters
Change light illuminated	Insufficient airflow caused by clogged filters	Replace the filters

XPOWER Limited Warranty (USA)

XPOWER's Limited Warranty covers the unit (excludes POWER CORD & FILTERS) from defects in material and craftsmanship. The Warranty covers normal use for a term of one year from the original date of purchase including parts, labor, and one way shipping. Non-contiguous states must pay for roundtrip freight. A purchase receipt must be provided.

Important!

This warranty does not cover or apply to defects due directly or indirectly to misuse, abuse, disassembly, alteration, corrosive chemicals, improper voltage, fire, flood, negligence, accident, improperly or incorrectly performed maintenance or repair, or failure to perform necessary maintenance or repair, or if the use of this product is not in compliance with the instructions and specifications for its use

Service

For Warranty service and parts replacement (US customer only), you must:

- A. Call 1-855-855-8868 for a RMA (Return-Merchandise-Authorization) number.
- B. Have original proof of purchase.
- C. Use the original undamaged packaging or an industrial certified packaging method.

End user will be responsible for shipping the unit (with RMA Number showing on the shipping label) to the XPOWER Service Department. XPOWER will inspect, assess and advise the repairs needed and the applicable cost, if any.

For users outside the US, please contact an XPOWER Distributor in your country or region for Warranty service and parts replacement.

XPOWER Pet Products for Professional Grooming Industry

Force Dryers

B-3 (2 HP / 8 Amps / 130 CFM) - with vacuuming feature

B-4 (3 HP / 10 Amps / 150 CFM) -with vacuuming feature

B-8 (4 HP / 12 Amps / 150 CFM) - brushless DC motor with heater

B-24 (3 HP / 12 Amps / 150 CFM) - with heater

B-25 (4 HP / 12 Amps / 160 CFM) - double motor

B-27 (6 HP / 19 Amps / 180 CFM) - double motor

Stand Dryers

B-16 (1/4 HP / 12 Amps / 300 CFM)

B-18 (1/3 HP / 18 Amps / 380 CFM)

Cage Dryers

X-430TF w/ 430MDK (1/3 HP / 3.8 Amps / 2000 CFM)

X-800TF w/ 800MDK (3/4 HP / 7.5 Amps / 3200 CFM)

Air Purification:

X-3300 / X-3500 - Air Scrubbers

APDS-1 - Air Purification & Drying System



Warranty Registration (for US customer only)

For your product warranty, please complete and mail / fax this form to XPOWER MANUFACTURE, INC.

Address: 220 Clary Ave., San Gabriel, CA 91776.

Tel: 626-285-3301

Fax: 626-285-3302

(For your convenience, register your product online at xpower.ws)

Company Name / Contact Person / Title _____

Address _____ City _____

State / Province _____ Zip _____ Country _____

Phone _____ Fax _____ E-mail _____

Model # _____ **Serial #:** _____

Date of Purchase ____/____/____ **Purchased From** _____

Additional Comments / Suggestions _____



From: _____



TO:
XPOWER MANUFACTURE, INC.
220 Clary Avenue
San Gabriel, CA 91776, USA
Tel: 626-285-3301, Fax: 626-285-3302



PLEASE READ AND SAVE THESE INSTRUCTIONS



AIR SCRUBBER

OWNER'S MANUAL

Models: X-3300, X-3500



XPOWER MANUFACTURE, INC.
220 Clary Avenue
San Gabriel, CA 91776, USA
Tel: 626-285-3301, Fax: 626-285-3302
www.xpower.ws

Introduction

XPOWER's unique and highly innovative air scrubber purifying systems create a fresh, clean environment in even difficult areas such as grooming salons. Both the X-3500 & X-3300 feature an advanced technology 4 stage filtration system along with a powerful 1/3 HP high capacity motor for spaces up to 1500 sq. ft. Enjoy breathing healthier with your XPOWER Professional Air Purification Equipment!

Features:

- 4-stage air filtration system
- Low amp usage with high airflow capacity from 550 CFM
- Variable Speed Control
- Easy cord wrap design
- Convenient filter change (clean) light
- Stackable, compact, and lightweight design
- 2 airflow positions – upright (vertical) or horizontal
- Durable and rugged ABS housing
- 1 year limited warranty

Index

Introduction	2
Safety Instructions	3
Operation	4
Specifications	5
Parts List	6~7
4-Stage Filtration Systems	8
Maintenance	9-14
Cleaning of Washable Nylon Pre-Filters	10
X-3300 Primary Filter Care	11
X-3500 Primary Filter Care.....	12-13
Filter Replacement	14
Troubleshooting	15
Warranty / Service	16
Registration Form	18

- 1 -

Safety Instructions

WARNING: IMPORTANT SAFETY PRECAUTIONS! PLEASE READ COMPLETELY BEFORE USING PRODUCT!

When using electrical appliances, basic safety precautions should always be followed to reduce the risk of fire, electric shock, and personal injury, including but not limited to the following:

1. To prevent electric shock, do not operate the unit in standing water. Never plug in or unplug the unit with wet hands or while standing in water.
2. To avoid risk of injury, do not direct air flow at face or body.
3. Use only with GFCI protected receptacles. Please contact a qualified electrician for verification and / or installation of a GFCI receptacle if necessary.
4. Do not operate any unit with a damaged cord or plug. Discard Air Scrubbers or return to an authorized service facility for examination and/or repair.
5. Air Scrubber is an automatically operated device. To reduce the risk of injury, disconnect from power supply before servicing.
6. Do not run cord under carpet. Do not cover cord with throw rugs, runners, or similar coverings. Do not route cord under furniture or appliances. Arrange cord away from traffic area and where it will not be tripped over.
7. Do not allow children to play with or around the Air Scrubbers at any time.
8. Do not move or carry the Air Scrubber while unit is operating.
9. Keep air intakes and exhausts clean at all times. Avoid clogging or blocking to prevent the machine from overheating. Blocking the air intake could result in a fire or electrical hazards.
10. Always place the Air Scrubber on a smooth and level surface for safe operation.
11. Unplug the unit before performing any maintenance, cleaning, or servicing.
12. Any misuse or abuse of this product will void the warranty.

- 3 -

Operation

In order to remove airborne particles from the surrounding environment, XPOWER Air Scrubbers are designed to draw air through a series of filters and deliver the purest air. Each filter stage operates with progressively higher efficiency. The unit removes airborne particles like hair, skin flakes, visible dust, mold spores, pollen, pet dander and miscellaneous debris.

1. XPOWER Air Scrubbers are shipped ready-to-use. Prior to plugging the unit into the power source, inspect completely for any shipping damage.
2. Carefully place the Air Scrubber upright on a stable, flat dry surface.
3. Plug the electrical cord into the power outlet.
4. The unit can be used in 2 different angle positions: vertical and horizontal.
5. Turn the control knob to desired speed and make sure the unit operates normally.
6. To reduce the risk of injury, close supervision is necessary when the machine is used near children. Do not allow children to play with, or around the Air Scrubber at any time.



Filter Change (Clean) Light

The Red Filter Change Light will illuminate when accumulated debris is over-saturated, and filter needs to be cleaned. If the light is still illuminated after the filters are cleaned, the filter(s) possibly need to be replaced.

- 4 -

Parts List

Item No.	Parts Name	Item No.	Parts Name
1	Washable outer nylon mesh filter	2	Air Inlet
3	Inlet Panel	4	Latch
5	16"x16" Washable Nylon Mesh Filter	6	Activated Carbon Filter
7	1.4" Thick HEPA Filter	8	Front Housing
9	Pressure Switch	10	HEPA Filter Change Light
11	Speed Control Knob	12	Control Panel
13	Potentiometer	14	Air Outlet Grill
15	Rear Housing	16	Motor
17	Fan		

** Actual parts are not limited on this list, contact XPOWER for ordering parts.

- 6 -

Specifications

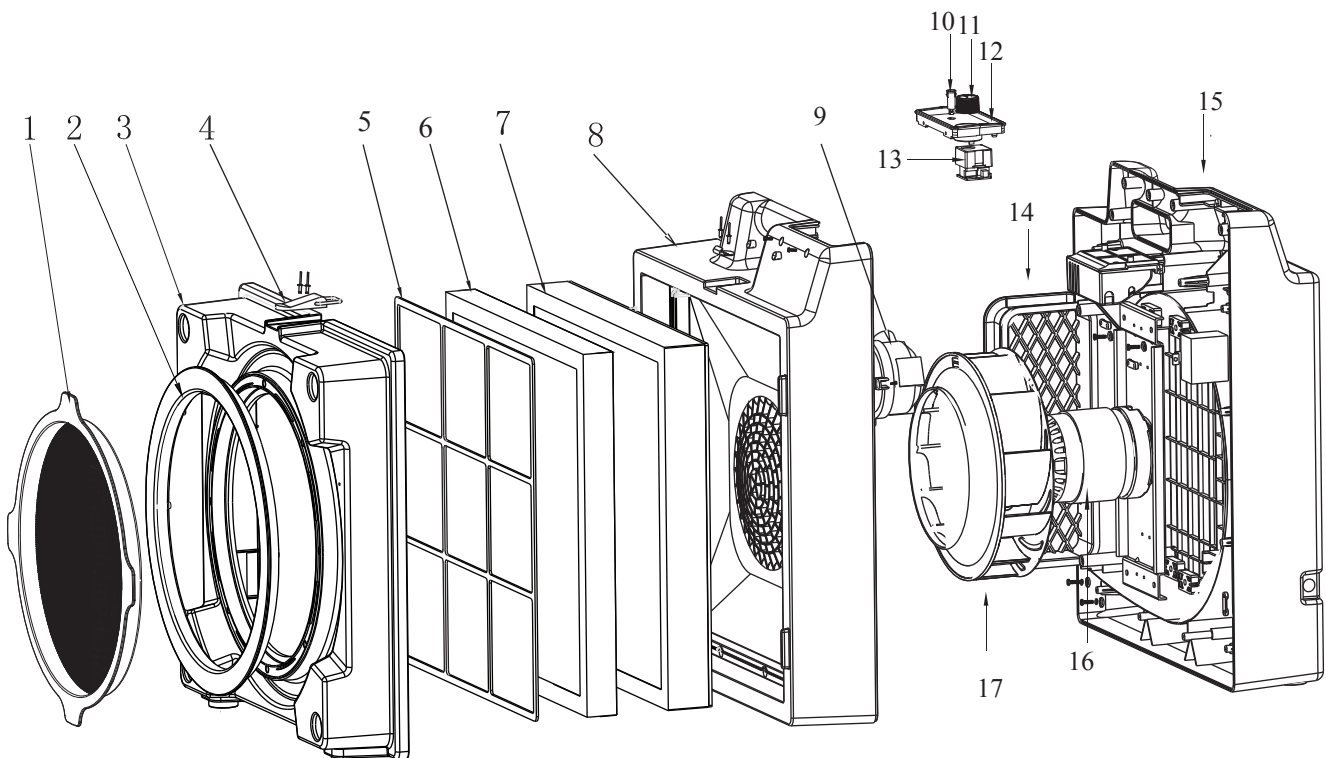
MODEL NO.	X-3300	X-3500
VOLTAGE / FREQUENCY	115 V / 60 Hz	
POWER	1/3 HP	
AMPERAGE	2.3 Amps (On Highest Speed)	
RATED AIRFLOW	550 CFM	
SPEEDS (RPM)	Variable Speed Control (950 – 2,400 RPM)	
UNIT WEIGHT	30.5 lbs	32.8 lbs
UNIT DIMENSIONS (L x W x H)	19.6" x 12.3" x 21.6"	
CORD LENGTH	13 ft. / 18AWG	
HOUSING	ABS	
DUCT (AIR OUTLET) SIZES	5" x 10.8"	
FILTER SYSTEM	4-STAGE	
1 ST STAGE FILTER	NFR12 - 12" Ø I.D. Washable Outer Nylon Mesh Filter	
2 ND STAGE FILTER	NFS16 - 16" x 16" Washable Nylon Mesh Filter	
3 RD STAGE FILTER	WF35 - 16" x 16" x 1.4" Washable PET Purifying Filter	CF35 - 16" x 16" x 1.4" Activated Carbon Filter
4 TH STAGE FILTER	WF35 - 16" x 16" x 1.4" Washable PET Purifying Filter	HEPA35 - 16" x 16" x 1.4" HEPA Filter
FILTER CLEAN/CHANGE LIGHT	Indicates when the filters to be cleaned or changed	
STACKABLE	Up to 5 units high	
SAFETY CERTIFICATIONS	/	ETL/CETL



Air Scrubber Storage

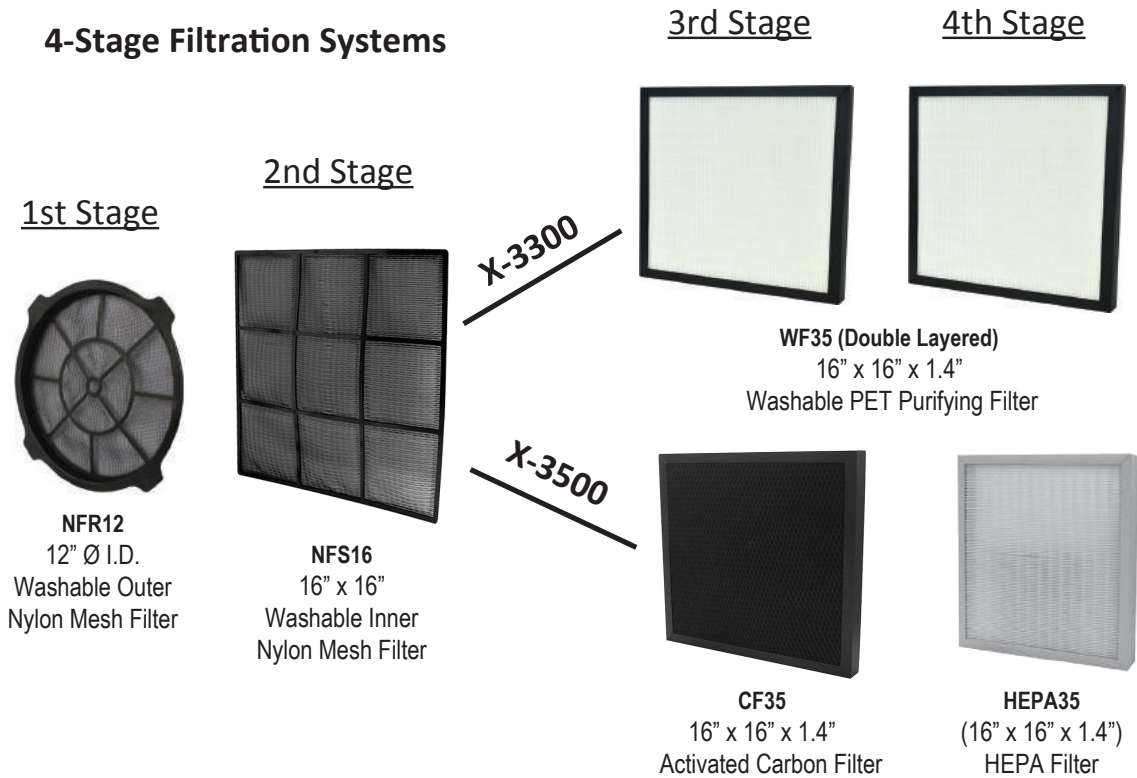
Air Scrubbers can be stacked (up to 5) on their sides for storage. Stacking feature is not secure for transportation.

- 5 -



- 7 -

4-Stage Filtration Systems



- 8 -

Cleaning of Washable Nylon Pre-Filters

NFR12 & NFS16 - Outer and Inner Nylon Mesh Filters are washable. These Pre-filters will protect the inner filters from larger particles and therefore extend the life and usage of the primary 3rd & 4th Stage filters. Always make sure the Air Scrubber is turned off before removing filters. Before cleaning, remove all debris from both the inner and outer nylon mesh filters, then, rinse with water and lay flat on a clean and dry surface to dry completely before re-installing. The NFR12 and NFS16 filters are used for X-3300 and X-3500 air scrubbers as first two stages. Both filters need to be cleaned frequently, especially for the Outer Nylon Mesh Filter NFR12.



Fig. 1
Turn off the machine
before cleaning the
mesh filter



Fig. 2
Remove particles
before rinsing with
water

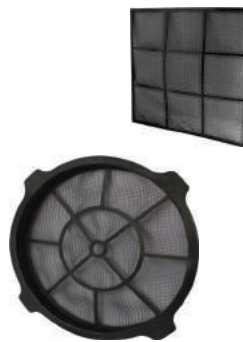


Fig. 3
Let filter dry on
a clean and flat
surface



Fig. 4
Re-install the clean,
dry filter

- 10 -

Maintenance

1. To keep the Air Scrubber clean, use a damp cloth to wipe the surface of the housing.
2. Never clean the Air Scrubber unit directly with water (see following pages for proper filter cleaning instructions).
3. When not in use, unplug and store the Air Scrubber in a dry indoor place out of reach of children.
4. Always disconnect the Air Scrubber from its power source before performing any maintenance or cleaning.

Important: Filter Maintenance and Replacement

Basic routine maintenance of filters is required to optimize performance of your air scrubber and extend the life of primary filters.

Both the XPOWER X-3300 and X-3500 filtration system include easy to clean, washable nylon pre-filters that should be frequently maintained. Monitor filters and clean or change out once they become loaded with particles. The air scrubber begins to reduce airflow and increase pressure drop. Overly loaded filters not only restrict CFM, they can also result in a loss of filtration efficiency. XPOWER Air Scrubbers include on-board pressure sensors that automatically alert the Filter Change (Clean) Light when the filters need cleaning. The filter may need to be changed after using for a quite long period.



Loaded Filter

- 9 -

X-3300 Primary Filter Care

WF35 – Two layers of washable PET Purifying Filters are featured with the X-3300 Air Scrubber. These filters trap smaller contaminants to alleviate allergies and other common respiratory problems.

The Primary WF35 filters require a simple maintenance routine for effective performance. The Filter Change Light will light up when filters need attention. Always make sure that the Air Scrubber is turned off before removing filters.

Cleaning X-3300 PET Purifying Filters (WF35):

1. Remove filters and lay them on a flat clean surface
2. Use a vacuum or clean cloth to remove loose debris
3. Rinse thoroughly with water
4. Lay on a flat surface on top of a clean cloth to completely dry before reinstalling

ATTN: ONLY the X-3300 Features 4 Washable Filter Stages. DO NOT WET X-3500 Model primary Filters (Carbon CF35 & HEPA35)



- 11 -

X-3500 Primary Filter Care

CF35 - Activated Carbon Filters are used to remove contaminants and impurities through the process of chemical absorption. The CF35 captures a wide variety of volatile organic compounds that includes smoke, food odors, fumes from paint and paint thinners, sewer odors and more. Carbon Filters can be reused if the adsorbed substances are removed. This process is known as 'regeneration'. Simply heating the spent carbon at a given temperature for an adequate length of time can regenerate activated carbon to the point where it can be reused. The CF35 fits the X-3500 model; it is placed inside the housing in front of the HEPA filter. Always make sure that the Air Scrubber is turned off when removing the carbon filter. Never use water to clean the CF35 filters. Use vacuum or clean cloth and lay it flat on a clean and dry surface. For best results, put the CF35 under the sun and leave it there for a couple of hours. The capacity of the carbon filter will vary widely depending on conditions, but it should be replaced when a decline of effectiveness is noted.



- 12 -

Filter Replacement

The filters may need to be changed after certain period of time depending on your usage and the life of each type of filters.

All filter accessories are available for purchase directly from XPOWER's headquarters in California. Please call our Customer Service at (626) 376-0190 or email us at info@xpower.ws.

Always wear a respirator and personal protective gear when removing or replacing filters. Lay the Air Scrubber flat, unlock top latch of the housing, open the inlet panel and remove filters.

Precautionary Measure When Cleaning and Changing Filters

An air scrubber captures particles that can be hazardous to human health. During the process of changing filters, decontamination, or performing maintenance, large concentrations of captured particles can become airborne in the immediate area. For these reasons, air scrubber operators should wear appropriate personal protection equipment (PPE) when performing any type of service on an air scrubber. A NIOSH-approved respirator is always essential for these tasks. If you've used the air scrubber for mold remediation or in another environment with known contaminants, you should also consider wearing gloves, eye protection and coverall



NIOSH-Approved
Respirator Mask

Disposal of Filters

The particles captured by a filter can cause adverse human health effects once they are released into the air. For this reason, you should dispose of used filters with care. You should place used filters in a plastic bag and seal the top before disposing. Always follow local regulations before disposing.

- 14 -

X-3500 Primary Filter Care (cont'd)

HEPA35 – HIGH EFFICIENCY PARTICULATE AIR FILTER, also known as HEPA filter, ensures superior air quality inside our homes and protects us from a wide range of health risks associated with indoor air pollution. The filter is designed and implemented to trap even the tiniest contaminants (approximately 99.97% of all particles measuring 0.3 microns) that aren't usually captured by traditional air filters, in order to prevent allergies and other common respiratory problems. The HEPA filter requires a simple maintenance routine, which can be performed in a timely and cost-effective manner. To maximize HEPA filter life, be sure to clean/change the pre-filters regularly. The Filter Change Light will light up when filters need attention. Always make sure that the Air Scrubber is turned off before removing the HEPA filter. Never use water to clean the HEPA filter. Use vacuum or clean cloth and lay it flat on a clean, dry surface. When putting the HEPA filter back into the machine, make sure the side with the gasket is facing the motor housing to prevent air leakage.



- 13 -

Troubleshooting

For any problems not listed below, call your local distributor or contact our Service Department.

SYMPTOM	POSSIBLE CAUSE	ACTION
Motor not running	Switched off	Make sure unit is plugged in and switch is turned to ON mode
	Power failure	Check outlet/change to another outlet
	Wiring failure	Contact XPOWER for service/repair.
Scraping noise from fan	Obstruction at the intake or exhaust of fan	Remove obstruction
	Fan broken	Contact XPOWER for service/repair
Weak air flow	Obstructed vents and/or filters	Clean out vents/inlets/filters
Change light illuminated	Insufficient airflow caused by clogged filters	Replace the filters

- 15 -

XPOWER Limited Warranty (USA)

XPOWER's Limited Warranty covers the unit (excludes POWER CORD & FILTERS) from defects in material and craftsmanship. The Warranty covers normal use for a term of one year from the original date of purchase including parts, labor, and one way shipping. Non-contiguous states must pay for roundtrip freight. A purchase receipt must be provided.

Important!

This warranty does not cover or apply to defects due directly or indirectly to misuse, abuse, disassembly, alteration, corrosive chemicals, improper voltage, fire, flood, negligence, accident, improperly or incorrectly performed maintenance or repair, or failure to perform necessary maintenance or repair, or if the use of this product is not in compliance with the instructions and specifications for its use

Service

For Warranty service and parts replacement (US customer only), you must:

- A. Call 1-855-855-8868 for a RMA (Return-Merchandise-Authorization) number.
- B. Have original proof of purchase.
- C. Use the original undamaged packaging or an industrial certified packaging method.

End user will be responsible for shipping the unit (with RMA Number showing on the shipping label) to the XPOWER Service Department. XPOWER will inspect, assess and advise the repairs needed and the applicable cost, if any.

For users outside the US, please contact an XPOWER Distributor in your country or region for Warranty service and parts replacement.

- 16 -

Warranty Registration (for US customer only)

For your product warranty, please complete and mail / fax this form to XPOWER MANUFACTURE, INC.

Address: 220 Clary Ave., San Gabriel, CA 91776. Tel: 626-285-3301 Fax: 626-285-3302

(For your convenience, register your product online at xpower.ws)

Company Name / Contact Person / Title _____

Address _____ City _____

State / Province _____ Zip _____ Country _____

Phone _____ Fax _____ E-mail _____

Model # _____ Serial #: _____

Date of Purchase ____ / ____ / ____ Purchased From _____

Additional Comments / Suggestions _____



XPOWER Pet Products for Professional Grooming Industry

Force Dryers

B-3 (2 HP / 8 Amps / 130 CFM) - with vacuuming feature

B-4 (3 HP / 10 Amps / 150 CFM) -with vacuuming feature

B-8 (4 HP / 12 Amps / 150 CFM) - brushless DC motor with heater

B-24 (3 HP / 12 Amps / 150 CFM) - with heater

B-25 (4 HP / 12 Amps / 160 CFM) - double motor

B-27 (6 HP / 19 Amps / 180 CFM) - double motor

Stand Dryers

B-16 (1/4 HP / 12 Amps / 300 CFM)

B-18 (1/3 HP / 18 Amps / 380 CFM)

Cage Dryers

X-430TF w/ 430MDK (1/3 HP / 3.8 Amps / 2000 CFM)

X-800TF w/ 800MDK (3/4 HP / 7.5 Amps / 3200 CFM)

Air Purification:

X-3300 / X-3500 - Air Scrubbers

APDS-1 - Air Purification & Drying System



From: _____



TO:

XPOWER MANUFACTURE, INC.

220 Clary Avenue

San Gabriel, CA 91776, USA

Tel: 626-285-3301, Fax: 626-285-3302

