



600 SERIES

XPOWER AIR MOVERS

Professional Air Movers to Get the Job Done

For long-term performance, the XPOWER 600 Series Air Movers are designed to serve the water damage restoration and janitorial carpet cleaning industries. Available in 1/3 HP and 1/2 HP models, the 600 Series are the industry's lightest and quietest centrifugal motor dryers.

Professional water damage restoration specialists use XPOWER's 600 Series because of their low electrical draw and a built-in GFCI daisy chain capability that allows multiple units on an electrical circuit.

Janitorial carpet cleaners employ the 1/2 HP model for its high CFM output and light carry weight. The XPOWER 600 Series are compact and stackable for storage ease. All 600 Series models are made with either ABS or PP and are ETL/CETL safety certified. Long term performance and reliability, use the XPOWER 600 Series Air Movers now!!!



P-600



P-630



P-630HC



X-600A



X-615A



SPECIFICATIONS

Air Mover Series	600 SERIES				
Model No.	P-600	P-630	P-630HC	X-600A	X-615A
Voltz/Hertz	115V / 60Hz				
Motor	1/3 HP	1/2 HP	1/2 HP	1/3 HP	1/5 HP
Power	3.8A	5A	5A	3.8A	1.5A
Rated Airflow	2400 CFM	2800 CFM	2800 CFM	2400 CFM	1050 CFM
Speeds	3 SPEEDS				
Cord Length	20 ft.	20 ft.	20 ft.	25 ft.	25 ft.
Operating Positions	4 Positions (0°, 20°, 45°, 90°)				
Stackable	✓	✓	✓	✓	✓
Daisy Chain (GFCI)				✓	✓
Filter Kit	OPTIONAL				
Carpet Clamp	OPTIONAL		✓	OPTIONAL	
Telescopic Handle w/ Wheels	OPTIONAL		✓	OPTIONAL	
Unit Weight	18 lbs	18.7 lbs	21.9 lbs	21.5 lbs	20.3 lbs
Unit Dimensions (LxWxH)	15.9"x15.7"x16.3"	15.9"x15.7"x16.3"	16.9"x15.7"x16.5"	15.9"x15.7"x16.3"	15.9"x15.7"x16.3"
Box Weight	22 lbs	22.4 lbs	26.3 lbs	25.2 lbs	24.3 lbs
Box Dimensions (LxWxH)	16.7"x16.5"x17.7"	16.7"x16.5"x17.7"	18.3"x17.7"x17.1"	16.7"x16.5"x17.7"	16.7"x16.5"x17.7"
Housing	PP			ABS	
Safety Certifications	ETL / CETL				
Dual Thermal Protection	✓	✓	✓	✓	✓
Pallet Quantity	36	36	36	36	36



WATER DAMAGE



FIRE & SMOKE DAMAGE



MOLD REMOVAL



RESTAURANT



Stackable

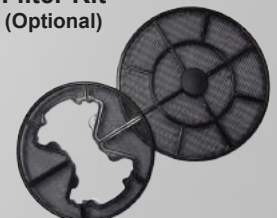
Daisy Chain



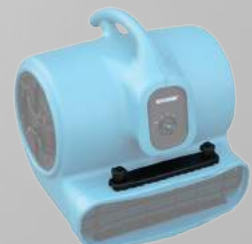
Handle Kit



Filter Kit (Optional)



Carpet Clamp Kit



4 Operating Positions



0° Floors



20° Furniture



45° Walls



90° Ceiling

